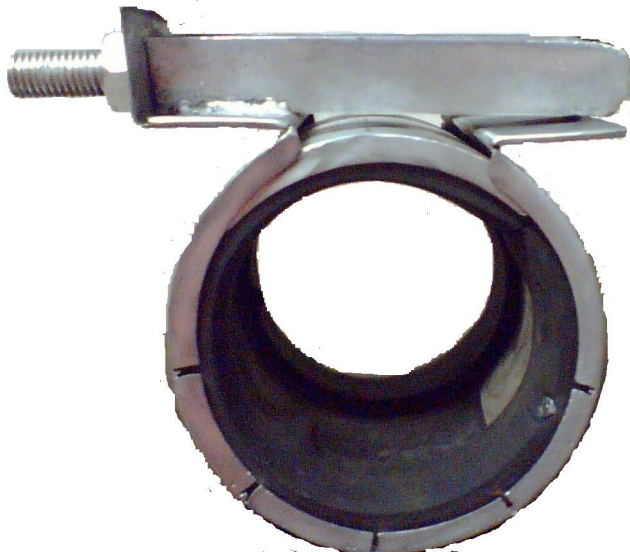


## FLEXSTEEL PIPE CLAMP



**GANDHI FLEXSTEEL PIPE REPAIR CLAMP**, are wrap type repair clamps for Online Permanent repair of Broken Damage pipes of varieties of material for water, Gas Petrochemical & many other fluids without cutting/Welding. Of pipe lines.

### **ADVANTAGES:**

- 1 Flex steel couplings are made from Austenitic Stainless Steel Sheet, Light in weight & Easy To install on pipeline. It can be installed in confined space.
- 2 It repairs the pipe line damage & stop leakage in very small time without cutting/welding or dismantling of line.
- 3 It can be used for various materials of pipes like Metal, Plastic, and Cement etc.
- 4 It very economical Detachable & Re usable with superior sealing capability.
- 5 Clamp is easy & fast to install, No special tooling Required, Save Time, Labour & Money.
- 6 Clamp is versatile in use, can be use as repair clamp, or joining clamp, or as axial motion compensator. Can be use for limited angular motion Also absorbs noise vibration etc, Used as Dampener.

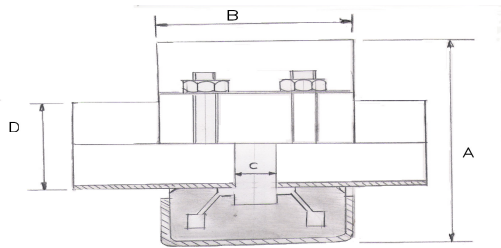
### **Pressure ratings (for water)\***

Pressure ratings depend on the type of break or damage, pipe OD medium etc.

In general, clamps for use on pipes of DN 40 up to including DN 1200 mm & Pressure range from 1.0 bar to 24 bar clamps are available in width of 140mm 210mm & 280mm.

Detail size & pressure ratings are describe in Catalogue.

\*A description of the testing conditions under which the clamps have been tested and testing methods is available on request. Please contact Flexsteel for pressures on gas pipes.



### Dimensions

NB	Pipe OD range D		Working Pressure	OD of coupling A	Gap of Pipe C	Width of coupling B	Torque of bolt Kg-Mt		
	Min	Max					140mm	200mm	275mm
1	33.2	34.2	30	51	4	45			
1.25	41.9	42.9	24	61	4	60			
1.5	47.7	48.7	24	66	7	60			
2	59.6	60.9	24	79	7	75			
2.5	75	77	24	99	7	95			
							Torque of Bolt Kg-Mt		
							140mm	200mm	275mm
3	88	90.5	24	112	7	20	20	20	
3.5	100	103	24	130	7	20	20	25	
4	113	115	24	137	7	20	25	25	
5	140	143	24	165	7	20	25	25	
6	167	170	16	193	7	20	15	40	
8	217	221	16	249	10	25	40	40	
10	270	275	16	302	10	25	40	50	
12	320	327	10	353	10	40	50	50	

#### Material:

Metal Body: SS304/SS316

Nut Bolt: SS304

Rubber Seal:

- |           |                     |  |
|-----------|---------------------|--|
| (1) SBR:  | Temp: -40 to 85 °C  | For Potable Water mild acid & Alkalies.  |
| (2) NBR:  | Temp: -40 to 106 °C | For Gas, Water, Oil & several chemicals. |
| (3) EPDM: | Temp up to 140 °C   | For Hot water, Steam, Several Chemicals  |

Other varieties are Viton, Silicon, White NBR (food grade).

**.Manufacture by:**

## **GANDHI ENGINEERING CO**

A-115, KHIRANE MIDC, TTC INDUSTRIAL AREA

THANE BELAPUR ROAD, NAVI MUMBAI-400710

TEL: +91-022-27685223, FAX: +91-022-27633855

E-MAIL: info@gandhiengg.com WEB: www.gandhiengg.com

**AN ISO 9001-2008 COMPANY**

