

HYSEAL PIPE CLAMP



GANDHI HYSEAL PIPE CLAMP, for Online Permanent repair of Broken Damage pipes of varieties of material for water, Gas Petrochemical & many other fluids without cutting/Welding. of pipe lines. Design confirms to API 6H

ADVANTAGES:

- 1 HYSEAL couplings are made from Stainless Steel / Carbon Steel etc, SPLIT DESIGN & Easy to install on pipeline. It can be installed in confined space.
- 2 It repairs the pipe line damage & stop leakage in very small time without cutting/welding or Dismantling of line. It can also use to stop leakages in Fittings like elbow Tee, Flange joints etc
- 3 It can be used for various Pressure ratings up to 5000psig It very economical Detachable & Re usable with superior sealing capability.
- 4 Clamp is easy & fast to install, No special tooling required, Save Time, Labor & Money.
- 5 Clamp is versatile in use, can be use as repair clamp .it can be used for permanent Repair, temporary repair, online branch connection etc.

Pressure ratings (for water)*

Pressure ratings depend on the type of break or damage, pipe OD medium etc.

In general, clamps for use on pipes of DN 40 up to including DN 1200 mm & Pressure range from 1.0 bar to 150 bar clamps are available in width of 127 mm, 140mm, 210mm & 280mm. Other tailor made width available on request.

Detail size & pressure ratings are describe in Catalogue.

***ANY SIZE/TYPE &PRESSURE TEMPRETUR RATED CLAMP CAN BE MADE AS PER REQRIMENT..**

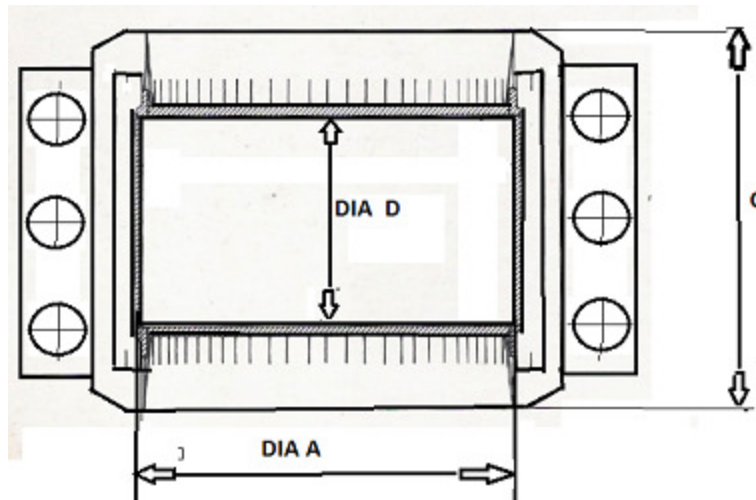
Material:

Metal Body: SS304/SS316/CS/516 GR 70

Nut Bolt: High tensile

Rubber Seal:

- | | | |
|-----------|-------------------|---|
| (1) SBR: | Temp: -40 to 85°C | For Potable Water mild acid &Alkalis. |
| (2) NBR: | Temp:-40 to 106°C | For Gas, Water, Oil &several chemicals. |
| (3) EPDM: | Temp up to 140°C | For Hot water, Steam, SeveralChemicals |
- Other varieties are Viton, Silicon, White NBR (food grade).



Dimensions

NB (API) (Inches)	Inside Diameter A	Inside Width C	Overall Width B
1.5	49	140	230
2	61	140	230
2.5	74	140	230
3	89	140	230
4	115	300	230
5	142	300	230
6	169	300	230
8	220	300	415
10	274	400	530
12	325	400	530
14	357	450	600
16	408	450	600
18	459	450	600
20	510	450	600

Application: (1) coupling for connecting two pipes. (2) Online Repair of leak pipe, (3) Connecting different material pipes. (4) Flexible connection as expansion joint. (5) Use for absorbing noise, Vibration etc. (6) Detachable & Re-usable.

Manufactured by:

GANDHI ENGINEERING CO

A-115, KHIRANE MIDC, TTC INDUSTRIAL AREA

THANE BELAPUR ROAD, NAVI MUMBAI-400710

TEL:022-27685223, M-9821489659

E-MAIL: info@gandhiengg.com WEB: www.gandhiengg.com

AN ISO 9001-2008 COMPANY